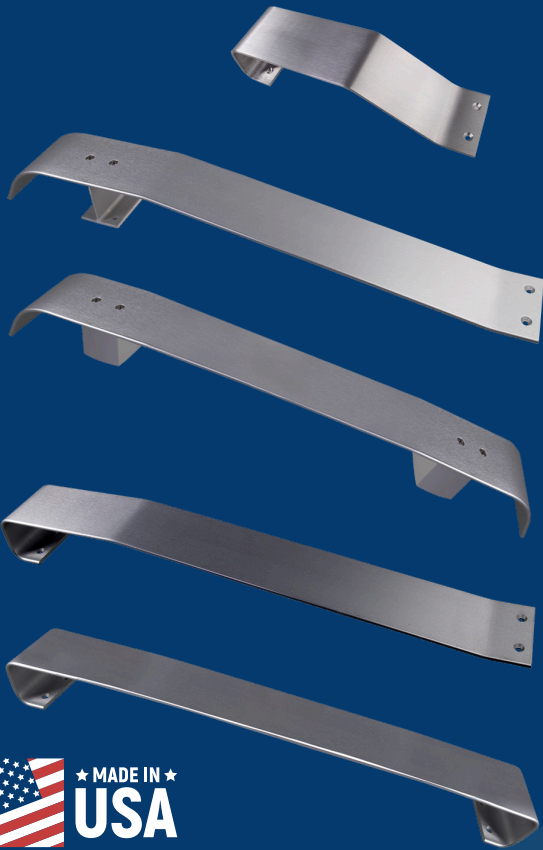




Door Shields, Jamb Guards And Door Handle Protectors



Life Science Products

124 Speer Road, Chestertown, MD 21620
www.lspinc.com | 800-638-9874 | info@lspinc.com

© 2023 Life Science Products, Inc.

**Doors are
Expensive & Fragile!
Protect them with LSP
Door Shields,
Kick Plates and
Jamb Guards**



Door Shields, Jamb Guards and Door Handle Protector Features:

- Custom Made to Door Size
- Stainless Steel or Aluminum
- Exceptional Impact Resistance
- Class "A" Fire Rated
- Variety of Styles and Fastening Points
- Jamb Guards available in 2', 4', 6' & 8' Lengths
- Jamb Guards all Stainless Steel
- Designed to be used on either FRP or Metal Doors
- Made in U.S.A.

Door, Handle, and Jamb Protection:

Flush Mount Tapered Door Shield with Reverse Flange – No Bracket Required



Part #: ALDSFMTRF – 6061-T6 Aluminum (Anodized)
or
Part #: SSDSFMTRF – 304 Stainless Steel #4 Polish
 $\frac{1}{4}'' \times 3''$, $\frac{1}{4}'' \times 4''$, $\frac{1}{4}'' \times 6''$ with $\frac{1}{8}''$ Radius Edge

Bracket Mount Door Shield with or without Bracket Sleeve



Part #: ALDSBM – 6061-T6 Aluminum (Anodized) or
Part #: SSDSBM – 304 Stainless Steel #4 Polish
 $\frac{1}{4}'' \times 3''$, $\frac{1}{4}'' \times 4''$, $\frac{1}{4}'' \times 6''$ edges chamfered to
.031" minimum radius

Flush Mount Door Shield Reverse Flanges – No Brackets Required



Part#: ALDSFM – 6061-T6 Aluminum Alloy Anodized)
or
Part#: SSDSFM – 304 Stainless Steel #4 Polish
 $\frac{1}{4}'' \times 3''$, $\frac{1}{4}'' \times 4''$, $\frac{1}{4}'' \times 6''$ with $\frac{1}{8}''$ Radius Edge

Bracket Mount Tapered Door Shield

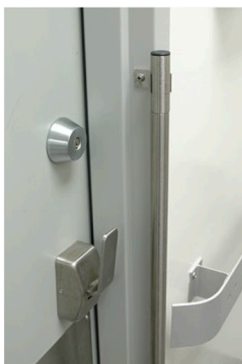


Part #: ALDSBMT – 6061-T6 Aluminum (Anodized) or
Part #: SSDSBMT – 304 Stainless Steel #4 Polish
 $\frac{1}{4}'' \times 3''$, $\frac{1}{4}'' \times 4''$, $\frac{1}{4}'' \times 6''$ edges chamfered to
.031" minimum radius

Flush Mounted Door Handle Protector with Tapered Reverse Flange No Bracket Required



Part #: ALHPFMTRF – 6061-T6 Aluminum (Anodized)
or
Part #: SSHPFMTRF – 304 Stainless Steel #4 Polish
 $\frac{1}{4}'' \times 3''$, $\frac{1}{4}'' \times 4''$, $\frac{1}{4}'' \times 6''$ edges chamfered to
.031" minimum radius



Jamb Guard Part #: JG-1
Standard 4' Length
Custom Lengths Available
304 Stainless Steel – Inner and Outer Tubes.
Mounting Brackets – 1.00" x 1.25" x 1.25" spot welded to Outer Tube with
.313" Diameter Mounting Holes.
 $\frac{1}{4}'' \times \frac{1}{2}''$ Phillips Pan Head Type "A" Stainless Steel Tapping Screws

Additional Door Protection Items Include 16 Gauge 304 Stainless Steel Kick Plates in custom sizes, 304 Stainless Steel Door Jamb Covers that clad the entire door jamb, and 304 Stainless Steel Window Covers.

Life Science Products have been in demand by these and other highly respected institutions:

Bristol Meyer Squib | Children's Mercy | Cleveland Clinic | CalTech Univ. | Dana Farber | Duke University
Emory University | F.D.A. | Harvard University | M.D. Anderson | NIH | Novartis | Northwestern University
Ohio State U. | Pfizer | Princeton University | Regeneron | University of North Carolina | Yale University